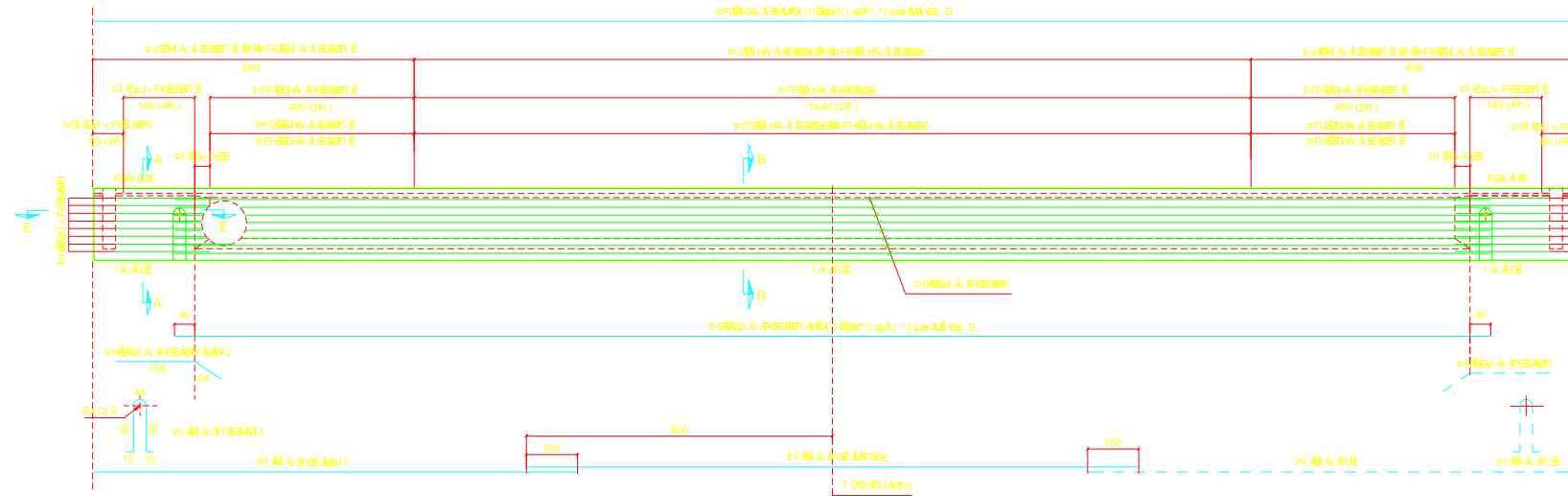
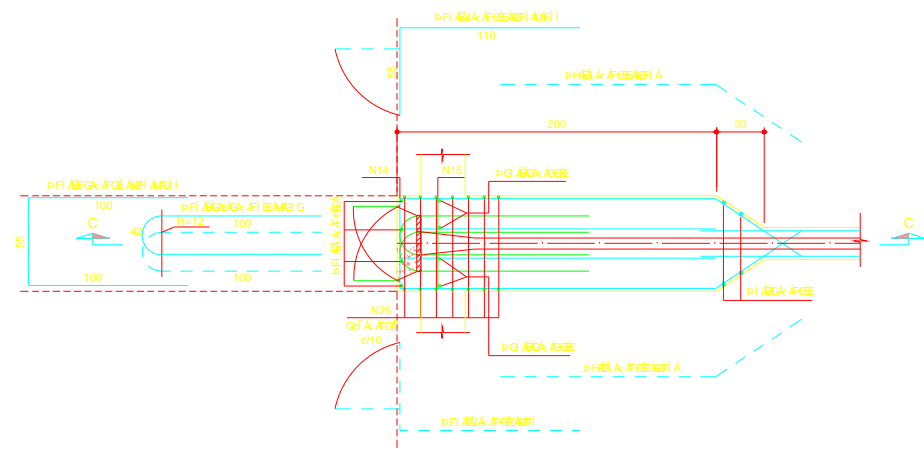


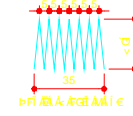
ΌΣΟΧΕ ΤΙΛΑΟΚΩΟΕΩΓ
ESC. 1/75



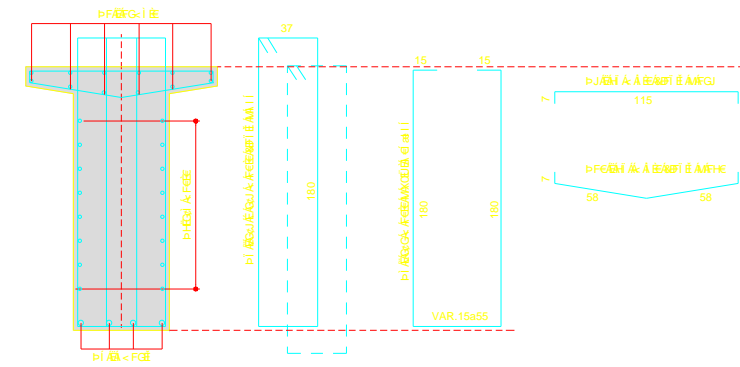
ARM. DO ENGRASSAMENTO - CORTE E-E (2x5)
ESC. 1/25



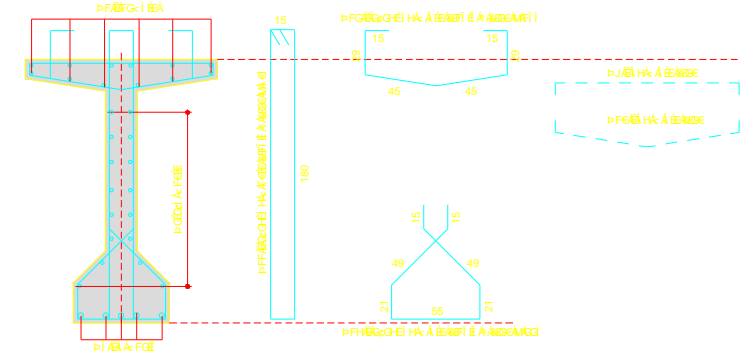
FRETAGEM (2x5) - CIRCULAR
ESC. 1/20



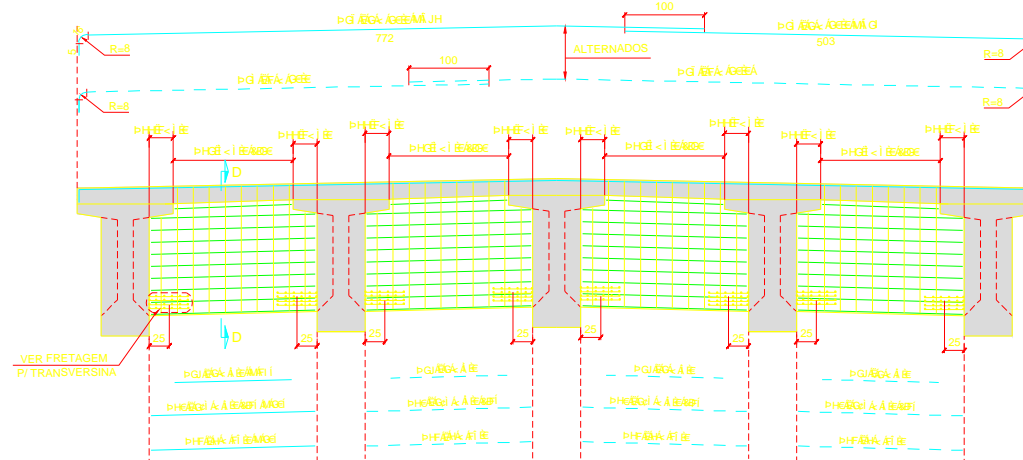
CORTE A-A (ENGRASSAMENTO)
ESC. 1/25



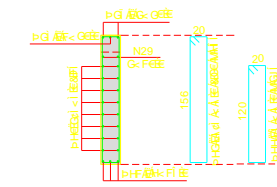
ΌΥΨΟΑΟΕΩΓΤΙΛ
ESC. 1/25



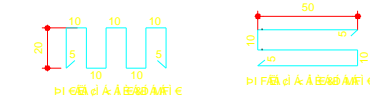
ΩΥΤΩ ΤΙΛΑΟΑΨΩΨΟΨΩΟΕΩΓ
ESC. 1/50



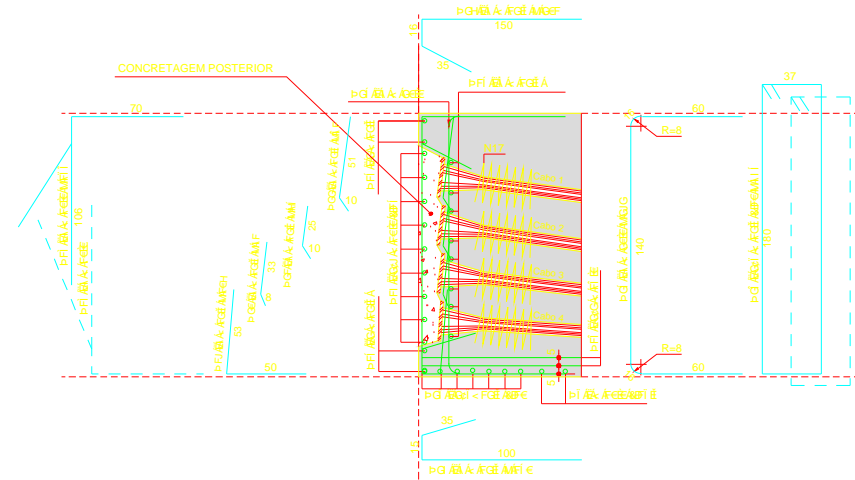
CORTE D-D
ESC. 1/50



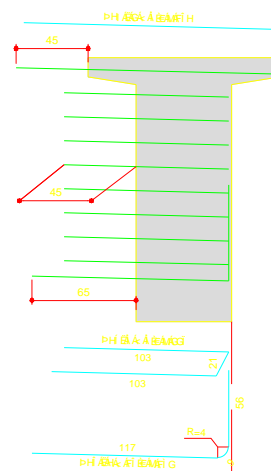
FRETAGEM - TRANSVERSINAS (2x)
ESC. 1/20



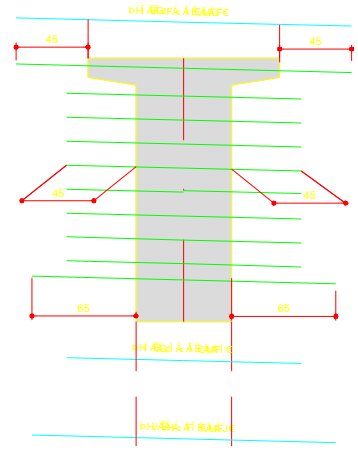
CORTE C-C (2x5)
ESC. 1/25



VIGAS EXTREMAS (2x2)
ESC. 1/25



ΧΩΩΑΨΨΟΥΤΩΨΩΨΩΨΩ
ESC. 1/25



LISTA DE FERROS				
N	Ø	Quant.	Comprimentos	
			unit	total
1	8,0	60	Corr.	1785,60
2	10,0	80	Corr.	2144,00
3	10,0	160	Corr.	219
4	16,0	40	264	105,60
5	12,5	40	947	378,80
6	12,5	25	1200	300,00
7	10,0	180	445	801,00
8	10,0	20	Var	85,00
9	8,0	785	129	1012,65
10	8,0	785	130	1020,50
11	10,0	645	405	2612,25
12	8,0	645	178	1148,10
13	8,0	645	225	1451,25
14	10,0	180	165	297,00
15	12,5	120	255	306,00
16	16,0	40	242	96,80
17	12,5	40	550	220,00
18	10,0	80	175	140,80
19	12,5	40	103	41,20
20	12,5	40	41	16,40
21	12,5	40	35	14,00
22	12,5	40	61	24,40
23	12,5	40	201	80,40
24	12,5	40	150	60,00
25	20,0	40	292	116,80
26	12,5	140	445	623,00
27	20,0	6	793	47,58
28	20,0	6	524	31,44
29	8,0	16	145	23,20
30	8,0	128	205	262,40
31	16,0	24	205	49,20
32	8,0	64	365	233,60
33	8,0	16	295	47,20
34	8,0	8	163	13,04
35	8,0	32	227	72,64
36	16,0	12	182	21,84
37	8,0	12	210	25,20
38	8,0	96	150	144,00
39	16,0	18	190	34,20
40	8,0	64	180	115,20
41	8,0	64	180	115,20
42	---	---	---	---

RESUMO CA-50		
Ø	COMPR (m)	PESO (kg)
6,3	---	---
8,0	7489,78	2988
10,0	6430,45	4051
12,5	2064,20	2064
16,0	307,64	492
20,0	195,82	490
25,0	---	---
Total		10085

NOTAS:

- 1 - Medidas em cm, batolas em mm.
- 2 - Concreto estrutural - Super fck > 35 MPa.
- 3 - Cobrimento das armaduras : = 2,5 cm.

Rua Celso de Faria, 389 - Brooklin - São Paulo - SP

 Tel: 0508.0655 - fares@faresassociados.com.br

Projeto PONTE SOBRE O RIBEIRÃO DOS MACACOS
Ciente PREFEITURA MUNICIPAL DE LORENA
Local ESTRADA DO CAMPINHO/BAIRRO PONTE NOVA-LORENA
Assunto Escola

PROJETO EXECUTIVO
ARMAÇÃO DA VIGA
LONG. E TRANSV.

Proj: **CRISTIAN** Data: 2011 Fl.nº
 Des: **RODRIGO**
 Verif.:
 Aprov.:
 Proj. nº:

06