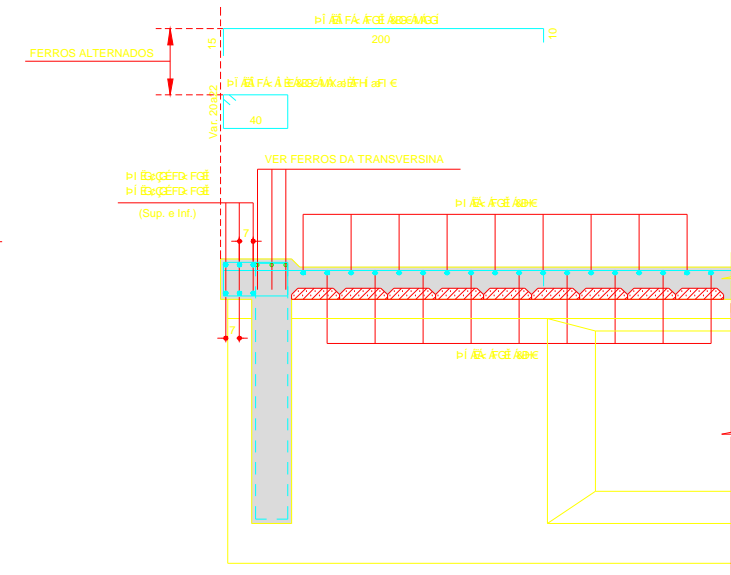


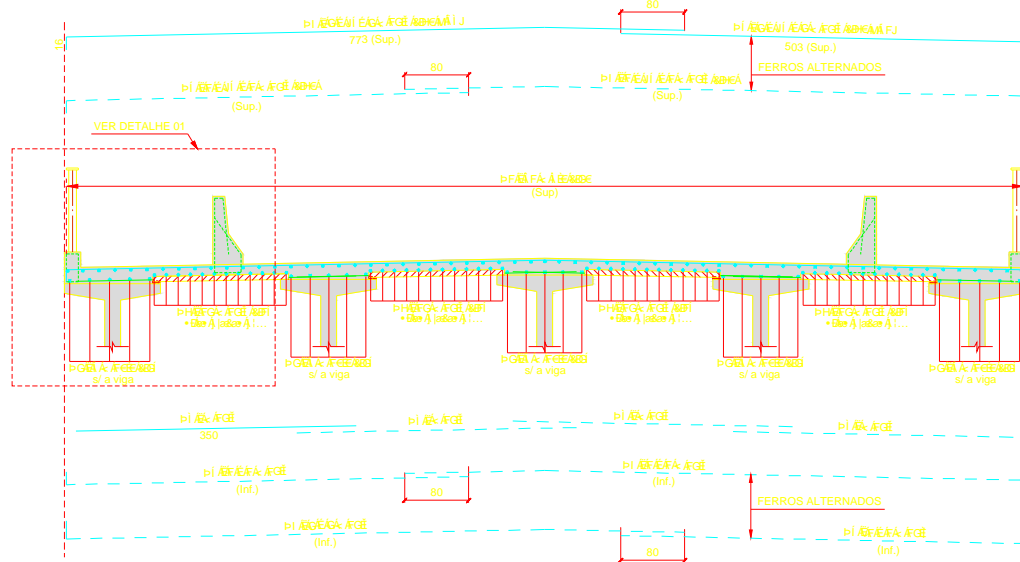
**COORTE DE QUADRO DE VIGAS**  
ESC. 1:75



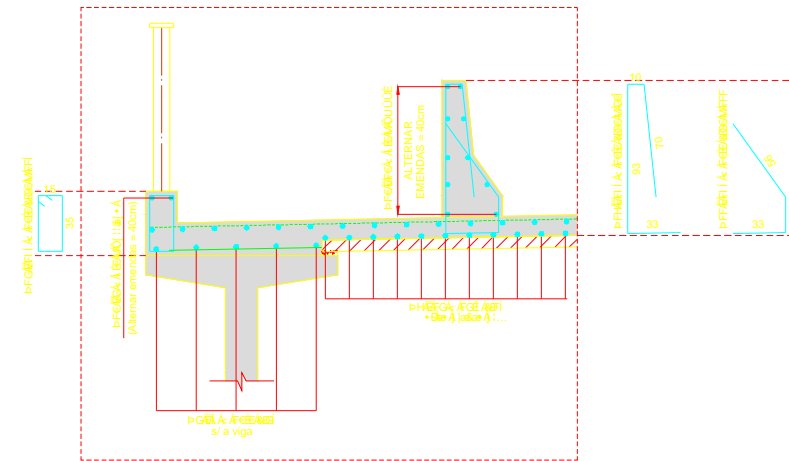
**CORTE A-A (2x)**  
ESC. 1:25



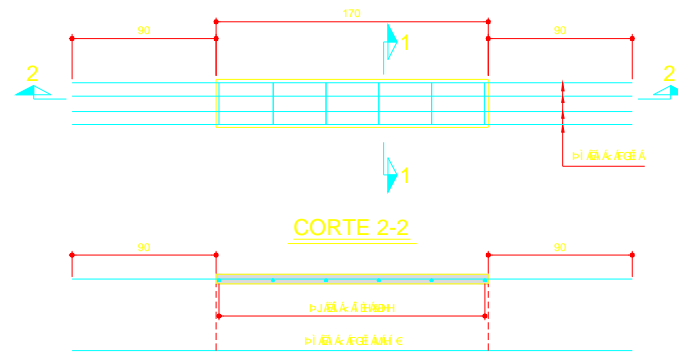
**DETALHE DE VIGA**  
ESC. 1:50



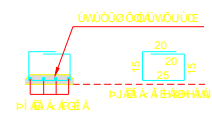
**DETALHE 01**  
COORTE DE QUADRO DE VIGAS  
ESC. 1:25



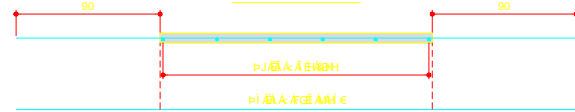
**COORTE DE QUADRO DE VIGAS**  
**TABULEIRO**  
ESC. 1:25



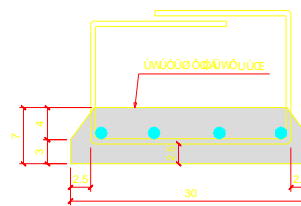
**CORTE 1-1**



**CORTE 2-2**



**COBERTURA DE PLACAS**  
ESC. 1:5



LISTA DE FERROS				
N	Ø	Quant.	Comprimentos	
			unit	total
1	8.0	81	Corr.	1820.24
2	10.0	25	Corr.	751.00
3	12.5	46	Corr.	1465.92
4	12.5	196	788	1546.44
5	12.5	198	519	1017.24
6	12.5	122	225	274.50
7	8.0	122	Var.	187.75
8	12.5	1504	350	5284.00
9	8.0	2256	95	2143.20
10	8.0	24	Corr.	718.16
11	10.0	280	111	321.90
12	10.0	290	115	333.50
13	10.0	290	206	597.40

RESUMO CA-50		
Ø	COMPR (m)	PESO (kg)
8.0	2143.20	538
8.0	2704.15	1082
10.0	2003.80	1282
12.5	9568.10	9568
<b>Total</b>		<b>12448</b>

n°	Data	Revisão

**fares & associados**  
 Rua Estrela, 289 - Brás Copes - São Paulo - SP  
 Tel: 5508.0665 - fares@faresassociados.com.br

Projeto: PONTE SOBRE O RIBEIRÃO DOS MACACOS  
 Cliente: PREFEITURA MUNICIPAL DE LORENA  
 Local: ESTRADA DO CAMPINHO/BARRIO PONTE NOVA-LORENA  
 Assunto: Escola

**PROJETO EXECUTIVO**  
**ARMAÇÃO DA LAJE E**  
**PL. PRÉ-MOLDADAS**

Proj.	Data	Fl.º
CRISTIAN	2011	
Des.	RODRIGO	
Verif.		
Aprov.		
Proj. n°		

**Notas:**  
 1 - Ver notas gerais na FL. 1.  
 2 - Cobrimento das armaduras = 2.5cm.  
 3 - Ver notas gerais na FL. 1.

08