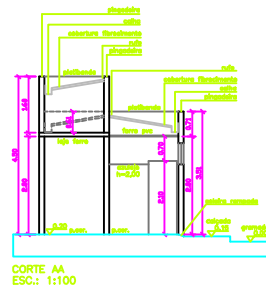
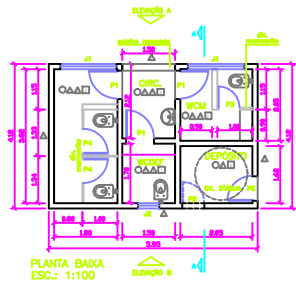
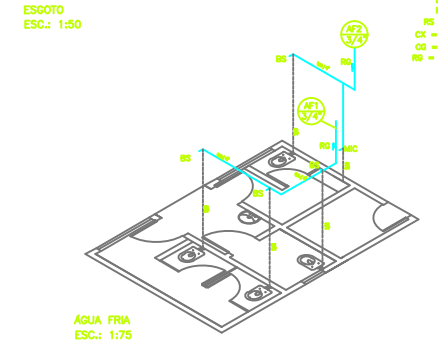
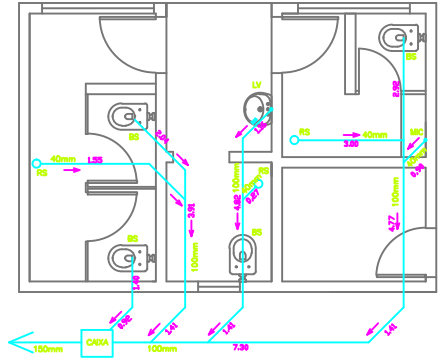
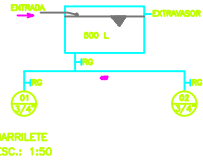
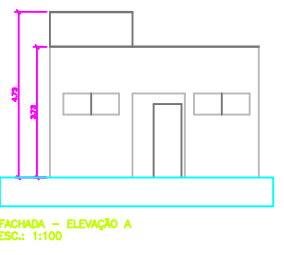
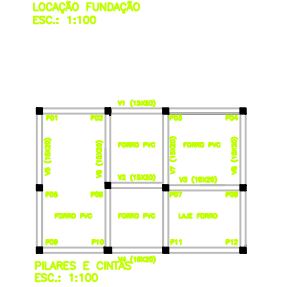
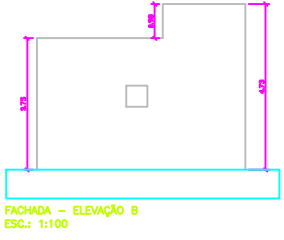
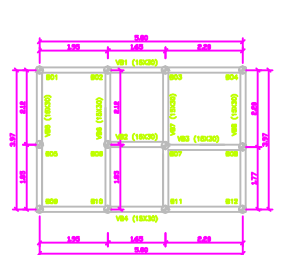


# SANITÁRIOS



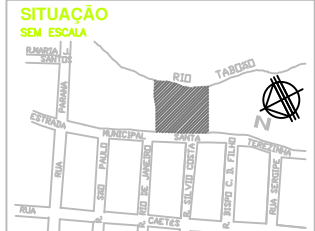
QUADRO DE ESQUADRIAS	
PORTAS	JANELAS
P1 - 0,80 x 2,10m (abrir/madeira)	J1 - 1,60 x 0,60 / 2,00m
P2 - 0,70 x 2,10m (correr/madeira)	J2 - 0,60 x 0,60 / 2,00m
P3 - 0,60 x 1,80m (abrir/laminado melamínico)	
P4 - 0,70 x 1,80m (abrir/laminado melamínico)	
P5 - 0,60 x 0,60m (abrir/metálico)	

- ### ACABAMENTOS E REVESTIMENTOS
- PISOS  
Fôrro PVC
  - △ PAREDES  
Fôrro PVC
  - TETOS  
Fôrro PVC



- LEGENDA
- BS = BACIA SANITÁRIA
  - LV = LAVABO
  - MC = MICTÓRIO
  - RS = RALO SIFONADO
  - CX = CAIXA DE INSPEÇÃO
  - CG = CAIXA DE GORDURA
  - RG = REGISTRO DE GAVETA

OBRA  
**REFORMA DE PARQUE ECOLÓGICO ÁGUAS DO BARÃO**  
**CONSTRUÇÃO DE SANITÁRIOS**  
 LOCAL  
 ESTRADA MUNICIPAL SANTA TEREZINHA  
 BAIRRO CIDADE INDUSTRIAL-LORENA-SP  
 PROPRIETÁRIO  
**PREFEITURA MUNICIPAL DE LORENA**



PREFEITO MUNICIPAL DE LORENA

ÁREA

ÁREA